



**TALBOT WALSH®**  
ENGRAVING & SIGNS

PHONE

**(08) 9470 5555**

FAX

**(08) 9470 4454**

**181 STAR ST  
CARLISLE  
WA 6101  
AUSTRALIA**

TECHNICAL ASSISTANCE  
[sales@talbotwalsh.com.au](mailto:sales@talbotwalsh.com.au)

WEBSITE  
[www.talbotwalsh.com.au](http://www.talbotwalsh.com.au)

*Open Monday to Friday  
from 8.30am to 5.00pm*

LINK TO THE  
PRODUCT WEB PAGE



Industrial Labels

# Information Labels, Signs and Plates

## DESCRIPTION

Industrial information labels can be manufactured using laser etched stainless steel, anodised aluminium or plastic.

For colour detail we use full colour digital printing with heavy duty overlamine onto a rugged 2mm composite aluminium substrate.

## MATERIALS AVAILABLE

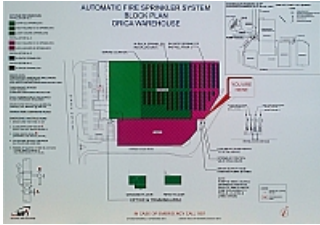
- Stainless steel
- Anodised aluminium
- Full colour digital print

## APPLICATION EXAMPLES

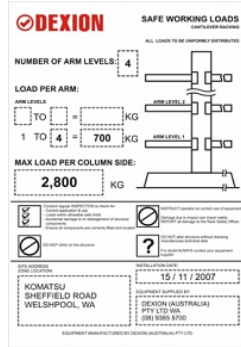
- Product identification
- Switchboard labels
- Vehicle labels
- Mining equipment labels
- Compliance for products and equipment
- Instructions for operators of equipment
- Caution labels
- Warning labels
- Specific event labels

# Information Labels, Signs and Plates

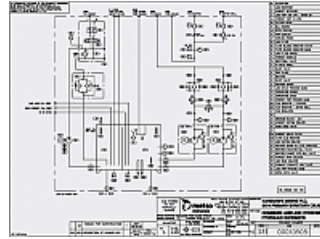
## PHOTOS



Full colour digital print with overlaminates onto 2mm composite aluminium substrate



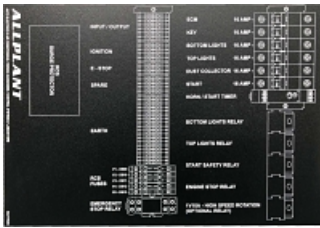
Full colour digital print with overlaminates onto 2mm composite aluminium substrate



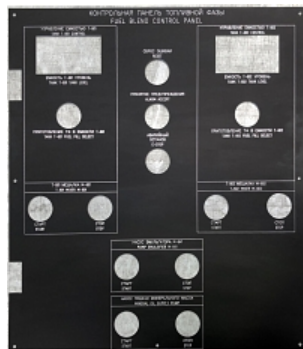
Full colour digital print with overlaminates onto 2mm composite aluminium substrate



Plastic engraved, control panel, tough UV resistant textured surface



Plastic engraved, tough UV resistant textured surface



Black anodised aluminium control panel



Powder coated with laser etched details



Powder coated with laser etched details



Marine Grade Stainless Steel diagram with laser etched details